

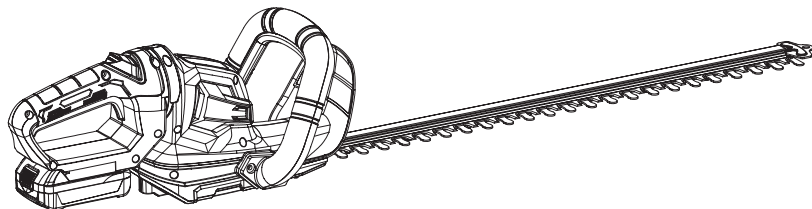
**Please, read this manual  
carefully before use!**

**Owner's Manual**



## **Cordless Hedge Trimmer**

KS HT-20V





Thank you for opting for **Könner & Söhnen®** products. This manual contains a brief description of safety, setup and use. More information can be found on the official importer's website in the support section: **konner-sohnen.com/manuals**

You can also go to the support section and download the manual by scanning the QR code or on the website of the official importer of **Könner & Söhnen®** at **www.konner-sohnen.com**



*Please, read this manual carefully before use!*

The manufacturer of **Könner & Söhnen®** products reserves the right to make changes that may not be reflected in this manual, namely:

- The manufacturer reserves the right to make changes in the product design, configuration and construction.
- The images and drawings in this manual are for reference only and may differ from the actual components and inscriptions on the products.

Contact information that you are free to use in case of any problems can be found at the end of this manual. All information in this manual is correct to the best of our knowledge and belief at the date of its publication. The current list of service centers can be found on the official importer's website at **www.konner-sohnen.com**



**ATTENTION – DANGER!**



**Failure to follow the recommendations marked with this sign may lead to serious injury or death of the operator or third parties.**



**IMPORTANT!**



**Useful information while operating the machine.**

## SPECIFIC SAFETY RULES FOR HEDGE TRIMMER

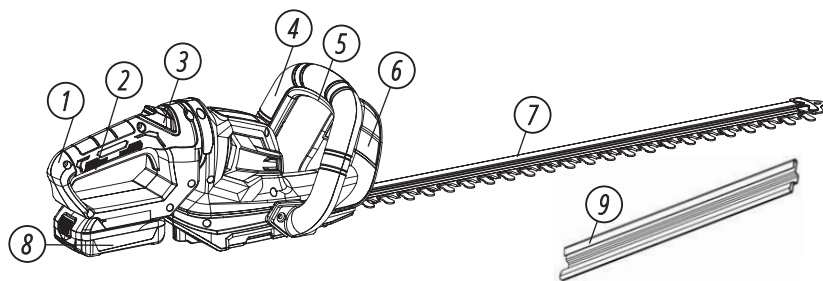
1

1. Use both hands when operating the hedge trimmer. Using one hand could cause loss of control and result in serious personal injury.
2. Keep all parts of the body away from the cutter blade. Do not remove cut material or hold material to be cut when blades are moving. Make sure the switch is off when clearing jammed material. Blades coast after turn off. A moment of inattention while operating the hedge trimmer may result in serious personal injury.
3. Carry the hedge trimmer by the handle with the cutter blade stopped. Proper handling of the hedge trimmer will reduce possible personal injury from the cutter blades.
4. Always wear eye protection with side shields. Following this rule will reduce the risk of serious personal injury.
5. Clear the area to be cut before each use. Remove all objects such as cords, lights, wire, or loose string which can become entangled in the cutting blade and create a risk of serious personal injury.
6. Before starting the hedge trimmer, make sure the blade is not in contact with any object.
7. Stop the unit and make sure the blade has stopped before setting the unit down.
8. Stop the unit, remove the battery pack, and make sure the blade has stopped before setting the unit down.
9. Always stop the motor when cutting is delayed or when walking from one cutting location to another.
10. Keep unit clean of clippings and other materials. They may become lodged in the cutting blades.
11. Replace blade cover when unit is not in use.

12. Never douse or squirt the unit with water or any other liquid. Keep handles dry, clean, and free from debris. Clean after each use; see storage instructions.
13. Secure the unit while transporting.
14. Remove the battery pack before making any adjustments, cleaning, storing, or removing material from the unit, or when not in use.
15. Never use water or any liquids to clean or rinse off your product and do not expose the product to rain or wet conditions. Store indoors in a dry area. Corrosive liquids, water, and chemicals can enter the product's electronic components and/or battery compartment and damage electronic components and/or the battery pack, which can result in a short circuit, increased risk of fire, and serious personal injury. Remove any buildup of dirt and debris by wiping the product clean with a dry cloth occasionally.
16. When transporting or storing the hedge trimmer always fit the cutting device cover.

## MAIN OVERVIEW

2



- |                           |                    |                           |
|---------------------------|--------------------|---------------------------|
| 1. Rear handle            | 4. Front handle    | 7. Blade                  |
| 2. Trigger switch         | 5. Lock-off button | 8. Battery (not included) |
| 3. Rotating handle button | 6. Safety guard    | 9. Scabbard               |

### UNPACKING:

- Hedge Trimmer
- Scabbard
- User manual

### SCABBARD

The scabbard keeps the operator from coming in contact with the sharp blades when the tool is not in use. It also helps keep the blades from being nicked or damaged when the tool is in storage.



**IMPORTANT!**



**Manufacturer reserves the right to make changes and/or improvements in design, components set and technical attributes without notice and without incurring obligation. The pictures in this manual are schematical and may not match the parameters of original product.**

### ASSEMBLY INSTRUCTIONS



**WARNING!**



1. If any parts are damaged or missing do not operate this product until the parts are replaced. Use of this product with damaged or missing parts could result in serious personal injury.
2. Do not attempt to modify this product or create accessories not recommended for use with this product. Any such alteration or modification is misuse and could result in a hazardous condition leading to possible serious personal injury.
3. Do not connect to power supply until assembly is complete. Failure to comply could result in accidental starting and possible serious personal injury.
4. Before assembly, make sure that the tool is switched off and the battery has been removed.

## SPECIFICATIONS

3

<b>Model</b>	<b>KS HT-20V</b>
<b>Rated voltage</b>	20V DC
<b>Battery capacity</b>	2,0 – 5,0 Ah (not included)
<b>Cutting length</b>	22" (55 cm)
<b>No load speed</b>	1550 spm
<b>Max Cutting diameter</b>	16 mm
<b>Gross dimensions (L×W×H)</b>	930×20×200 mm
<b>Gross/Net weight</b>	3,5/2,5 kg

## CONNECTING AND REMOVING BATTERY

4

### TO INSTALL THE BATTERY PACK

To install the battery pack into the bottom of the handle, align the rails of the battery pack with the rails in the handle and push the battery into the handle. To connect the battery, slide the battery pack fully forward. Until the latch locks into place.

### TO REMOVE THE BATTERY PACK

Press the battery release button, slide the battery pack backward, and then pull or lift the battery out of the tool.



**WARNING!**



**Follow these instructions in order to avoid injury and to reduce the risk of electric shock or fire:**

- **Replace the battery pack or the charger immediately if the battery case or charger cord is damaged.**
- **Verify that the battery pack is removed before inspecting, adjusting, or performing maintenance on any part of the power tool.**
- **Read, understand, and follow the instructions.**

## OPERATING INSTRUCTIONS

5

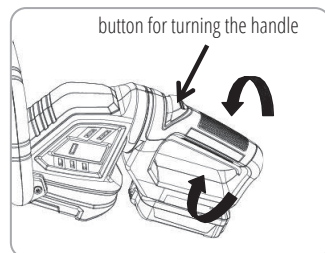
### STARTING/STOPPING THE HEDGE TRIMMER

- Remove the scabbard.
- To prevent the tool accidental starting, the hedge trimmer is designed with a two hand safety switches.
- To turn the hedge trimmer on both the rear handle trigger switch and front handle lock-off switch are required to be activated to start the hedge trimmer.
- To turn the hedge trimmer off, release either the rear handle trigger switch or front handle lock-off switch.

### ROTATING HANDLE

The handle can be rotated 45° or 90° to the left or to the right. To rotate handle:

1. Remove the battery pack.
2. Press on the rotating handle button.
3. Turn handle to the right or to the left.
4. Release rotating handle button. Keep turning handle until it locks into place in one of the 45° or 90° positions.





**IMPORTANT!**



The trimmer will only operate at one of these locked positions. The handle is locked when the rotating handle button is securely in place and the handle will no longer move to either side.

## HOLDING THE HEDGE TRIMMER

The unit has both a front and rear handle. With the blade directed away from you, hold the unit by both handles.



**WARNING!**



Always keep both hands on the hedge trimmer handles. Never hold shrubs with one hand and operate the hedge trimmer with the other. Improper operation of the hedge trimmer may result in serious injury.

## CUTTING TIPS



**IMPORTANT!**



Never cut near electric cords or lines. If blade jams on any electrical cord or line, **DO NOT TOUCH THE BLADE! IT CAN BECOME ELECTRICALLY LIVE AND VERY DANGEROUS.** Continue to hold the hedge trimmer by the insulated rear handle or lay it down and away from you in a safe manner.



**IMPORTANT!**



Clear the area to be cut before each use. Remove all objects such as cords, lights, wire, or loose string which can become entangled in the cutting blade and create a risk of serious personal injury.

1. Do not force the hedge trimmer through heavy shrubbery. This can cause the blades to bind and slow down. If the blades slow down, reduce the pace.
2. If blades do become jammed, stop the motor, allow the blades to stop and remove the battery pack before attempting to remove the obstruction.
3. If desired, you can use a string to help cut your hedge level. Decide how high you want the hedge. Then, stretch a piece of string along the hedge at this height. Trim the hedge just above this guide line of string. Trim the side of a hedge so that it will be slightly narrower at the top. More of the hedge will be exposed when shaped this way, and it will be more uniform.
4. When trimming new growth, use a wide sweeping action, so that the stems are fed directly into the cutting blade. Older growth will have thicker stems and will be trimmed easiest by using a sawing movement.

## MAINTENANCE

6

### GENERAL MAINTENANCE

- Avoid using solvents when cleaning plastic parts.. Clean dirt and debris from the body of the hedge trimmer, using a damp cloth with a mild detergent. Do not at any time let brake fluids, gasoline, petroleum based products, penetrating oils, etc., come in contact with plastic parts. Chemicals can damage, weaken or destroy plastic which may result in serious personal injury. Moisture can cause a shock hazard. Wipe off any moisture with a soft dry cloth.
- Use a small brush or the air discharge of a small vacuum cleaner brush to clear dust or debris from the blade on the motor housing.

### LUBRICATING THE BLADE



**WARNING!**



Always keep both hands on the hedge trimmer handles. Never hold shrubs with one hand and operate the hedge trimmer with the other. Improper operation of the hedge trimmer may result in serious injury.

For easier operation and longer blade life, lubricate the hedge trimmer blade before and after each use.

- Remove the battery pack from the hedge trimmer.
- Lay the hedge trimmer on a flat surface. Apply light weight machine oil along the edge of the top blade.



**IMPORTANT!**



**If you will be using the hedge trimmer for an extended time, it is advisable to oil the blade periodically.**

## WARRANTY SERVICE TERMS

# 7

The international manufacturer warranty is 1 year. The warranty period starts from the date of purchase. In cases when warranty period is longer than 1 year according to local legislation please contact your local dealer. The Seller which sells the product is responsible for granting the warranty. Please contact the Seller for warranty. Within the warranty period, if the product fails because of defects in the production process, it will be exchanged on the same product or repaired.

All faults caused by the manufacturer during the warranty period will be eliminated free of charge. Warranty repair is carried out only if you have a fully completed warranty card, the Buyer's signature of acceptance of the warranty terms, as well as a document supporting the purchase (cash receipt, sales slip or invoice). In the absence thereof, as well as in the event of errors or corrections not authenticated by the seller's seal or illegible inscriptions in the warranty card or tear-off coupon, no warranty repair is carried out, no objections to quality are accepted and the warranty card is withdrawn by the service center as invalid. The device is accepted for repair clean and full.



# EC Declaration of Conformity

Nr. 180

The following products have been tested by us with the listed standards and found in compliance with the European Community Directive 2014/30/EU relating to electromagnetic compatibility, Directive 2006/42/EC relating to machinery.

Manufacturer: DIMAX INTERNATIONAL GmbH  
Address: Flinger Broich 203, 40235 Duesseldorf, Germany  
Product: Cordless Hedge Trimmer "Könner & Söhnen"  
Type / Model: KS HT-20V

The statement is based on a single evaluation of above mentioned products. It does not imply an assessment of the whole production and does not permit the use of the test lab. logo. The manufacturer should ensure that all product in series production are in conformity with the product sample detailed in this report. The applicant should hold the whole technical report at disposal of the competent all the right.

Applied EC Directives: 2014/30/EU Electromagnetic compatibility Directive (EMC)  
2006/42/EC Machinery Directive  
Applied Standards: EN 55014-1:2017/A11:2020  
EN 55014-1:2017/A11:2020  
EN 62841-1:2015  
EN 62841-4-2:2019

## 2000/14/EC\_2005/88/EC Annex VI

For model KS HT-20V Noise measured Lwa = 92 dB (A), guaranteed Lwa = 94 dB (A)



21

**Issued Date:** 2024-02-08  
**Place of issue:** Duesseldorf  
**Director:** Fomin P.

*P. Fomin*

## DIMAX

International GmbH  
Flinger Broich 203 40235 Düsseldorf  
USt-ID DE296177274  
koenner-soehnen.com

We DIMAX INTERNATIONAL GmbH hereby declare that specified above conforms covering European Parliament and Council Directives, 2006/42/EC of 17 May 2006 Machinery Directive, Electromagnetic compatibility Directive (EMC) 2014/30/EC of 26 February 2014. The CE mark above can be used under the responsibility of manufacturer. After completion of an EC declaration of Conformity and compliance with all relevant EC directives.

## CONTACTS

### **Deutschland:**

DIMAX International GmbH  
Flinger Broich 203 -FortunaPark-  
40235 Düsseldorf, Deutschland  
[www.koenner-soehnen.com](http://www.koenner-soehnen.com)

### **Ihre Bestellungen**

[orders@dimaxgroup.de](mailto:orders@dimaxgroup.de)

### **Kundendienst, technische Fragen und Unterstützung**

[support@dimaxgroup.de](mailto:support@dimaxgroup.de)

### **Garantie, Reparatur und Service**

[service@dimaxgroup.de](mailto:service@dimaxgroup.de)

### **Sonstiges**

[info@dimaxgroup.de](mailto:info@dimaxgroup.de)

---

### **Polska:**

DIMAX International  
Poland Sp.z o.o.

Polska, Warszawska,  
306B 05-082 Stare Babice,  
[info.pl@dimaxgroup.de](mailto:info.pl@dimaxgroup.de)

---

### **Україна:**

ТОВ «Техно Трейд КС»,  
вул. Електротехнічна 47, 02222,  
м. Київ, Україна

[sales@ks-power.com.ua](mailto:sales@ks-power.com.ua)

---